

# 4485 Rue St-Dominique #304 Montréal (Le Plateau-Mont-Royal) (Montréal)

Reference: 25353963



**\$ 3,975 per Month**

2 Bedrooms 2 Bathrooms 871 ft<sup>2</sup>



**Samuel Larocque**  
514-816-5184 | Email

Informations non contractuelles



Bedrooms : 2

Bathrooms : 2

Rooms : 8

---

Property area : 871 ft<sup>2</sup>

Construction : 2016

Floor : 3

---

Floors : 4

Designed by the renowned firm Sid Lee Architecture, this exceptional two-level penthouse, located in the heart of the Plateau Mont-Royal, offers spectacular city views. This unique unit features two expansive terraces with unobstructed panoramas, perfect for fully enjoying the urban setting. Comprising two bedrooms and two bathrooms, the condo seamlessly blends industrial character with contemporary finishes, enhanced by high ceilings. Within walking distance of the neighborhood's best addresses.

Stunning penthouse designed by the internationally renowned firm Sid Lee Architecture. Enjoy a living space spread over two levels in the heart of the Plateau Mont-Royal, one of Montreal's most vibrant and sought-after neighborhoods.

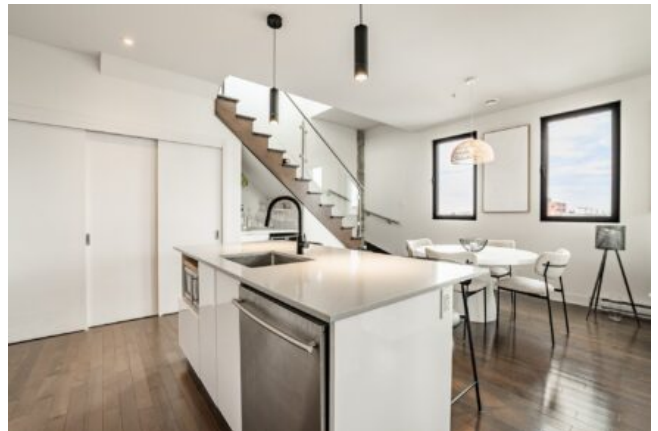
The unit features two bedrooms, including a primary bedroom located on the second floor with a spacious walk-in closet. This room provides direct access to an impressive private terrace with exceptional views of Mount Royal, the city, and the Olympic Stadium.

Electricity and internet at the tenant's expense.

Nearby: -7-minute walk to Mont-Royal Metro Station -5-minute walk to Mount Royal -Prime location to fully enjoy the Plateau Mont-Royal -Within walking distance to all services: gym, grocery stores, restaurants, bars, parks, and the mountain -Quick access to all universities in Montreal -BIXI Montreal station located directly in front of the building

Included : Furnished

Excluded : Equipment and personal belongings



Informations non contractuelles

**BARNES Québec**  
1472 Sherbrooke Ouest  
Montréal, QC H3G 1L3



+1 514.933.3235  
quebec@barnes-international.com